

ARJOHUNTLEIGH

GETINGE GROUP

SLING SOLUTION FOR EVERY NEED



...with people in mind

THE COMFORT LEVEL OF YOUR LIFTER IS DETERMINED BY THE SLING

ArjoHuntleigh is dedicated to improving patient handling by providing the optimum sling solution for individual needs. Choosing the right sling is vital to ensure safe, comfortable transfer routines for residents or patients with diminished mobility.

We offer a comprehensive range of slings to meet the needs of all care facilities. And, we help you to identify the combination of sling attachment, size, style, special features and material that matches your assessment of the patient's needs. The new ArjoHuntleigh sling user guide is now available on DVD.

ArjoHuntleigh offers slings with either clip or loop attachments. Clip slings, used with our four-point spreader bars (DPS), employ a proven attachment system developed by ArjoHuntleigh. Loop slings can be used in combination with our loop spreader bars.

The range of sling sizes covers the entire patient spectrum from paediatric to bariatric. Our measuring tape and colour-coded slings make it easy to identify the right size.

As well as standard slings, ArjoHuntleigh has developed *Flites*, disposable patient-specific slings that accompany a person throughout a hospital stay.

ArjoHuntleigh can also supply soft stretchers, one-piece sling solutions that can be used for patients who require full body support in a supine position during transfers.

We can meet any special design requests requiring sling customisation through our *Tailor Made Sling Service*.

The quality of ArjoHuntleigh slings is ensured by individual testing of every sling, including load testing at 1.25 times the maximum safe working load.





SLINGS WITH CLIP ATTACHMENT

General purpose slings

General purpose clip slings provide good comfort and support for a range of everyday patient handling routines such as bed and chair-related transfers. A 4-point clip sling enhances comfort by allowing a more even distribution of the resident's weight in the sling. Clip slings are used in combination with the DPS (Dynamic Positioning System) spreader bar, a system that allows the nurse or carer to position the resident or patient in the sling – from upright to reclined – with minimum physical effort.

- An unpadded solution is often suitable for normal usage. With no padding in the leg area, an unpadded sling is also easier to apply to residents with skeletal or spinal conditions.
- A padded solution is best for patients who will benefit from extra comfort. Padding enhances comfort in the sling's leg area.
- Mesh material allows water to pass easily through the sling – making it an ideal choice for showering or bathing.
- Breathable black material makes an All-day discrete solution suitable for patients who remain in the sling for long periods.
- An All-day mesh sling is applicable for patients who sit in a wheelchair for a long time each day, and also meets their showering or bathing needs.
- The Comfort Deluxe sling offers a very high level of comfort in key pressure areas such as the legs and shoulders due to no binding and additional padding.



Mesh sling



All-day sling



All-day mesh sling



Comfort Deluxe sling



Toilet sling



Amputee sling



Paediatric sling

Toilet slings

Our toilet sling with head support is a special-purpose design intended for toileting, dressing and undressing patients.

- This design ensures dignified handling routines with easy, efficient access to patient's clothing for dressing/undressing relating to toileting routines.
- The sling's leg supports are padded for comfort, but narrow to enable clothing to be removed easily.
- The padded arm of the sling provides comfort and support for the patient.
- Careful patient assessment is necessary before this sling is used

Amputee slings

Amputee slings are designed to fulfil the special support and comfort requirements of single and double amputees.

- Double amputee sling for bilateral leg amputee (above knee or total hip) requires "log rolling" technique.
- Right leg single amputee sling is for left single leg amputee (above or below knee or total hip) patients.
- Left leg single amputee sling applies to right single leg amputee (above or below knee or total hip) patients.
- Mesh amputee slings are intended for showering or bathing.
- The sling with velcro flap is for double amputee (above or below knee) patients and is applied like a normal sling, without "log rolling".

Paediatric slings

Every aspect of this general purpose paediatric sling has been designed with children in mind.

- Padding is positioned to provide extra comfort in the leg area and also helps to prevent the material roping and creasing under the legs.
- The sling's polyester material has been specifically developed for paediatric patients.
- To enhance its appeal to children, the sling is decorated with a printed elephant pattern.



Paediatric sling (above)
and padded clip sling.

SLINGS WITH LOOP ATTACHMENT



Without head support

General purpose slings

General purpose loop slings are intended for everyday patient handling routines such as bed and chair-related transfers.

- The padded sling with head support offers padding for the leg area of the sling, increasing comfort and helping to prevent the material roping and creasing under the patient's legs.
- Patients who have trunk and head stability can be safely and comfortably transferred in a padded sling without head support.
- A mesh loop sling is suitable for bathing and showering



Quick fit slings

As the name suggests, this sling is quick and easy to apply.

- Quick fit slings offer an alternative low-back design.
- The design makes this sling the appropriate choice in cases where the patient's arms, due to a medical condition or personal preference, need to be positioned outside the sling.

Toilet slings

Toilet loop slings are specifically designed for use in toileting and dressing/undressing patients.

- The padded arm of the sling provides comfort and support.
- Leg supports are padded for extra comfort, but are narrow to allow clothing to be removed.
- Selection of the right toilet sling, which is available with head support or without head support, is determined by a careful assessment of the patient's head and trunk stability.
- The toilet sling with head support can also be equipped with a safety belt around the upper body for extra security.

Hammock slings

Although the hammock sling is suitable for most patients, it is particularly applicable for lifting with the leg sections overlapped under both legs for single or double amputees, or to provide individual leg support for patients who are particularly sensitive to pressure.

- Hammock slings have head supports. Selection is determined by a careful assessment of the patient's head and trunk stability.



Quick fit sling



Toilet sling (also available with head support)

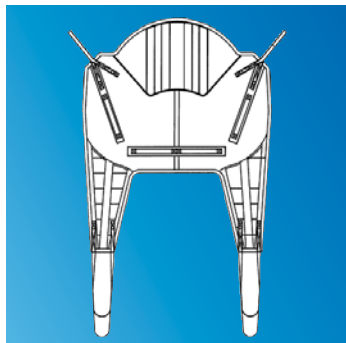


Hammock sling



Hammock sling

BARIATRIC SLING SOLUTIONS

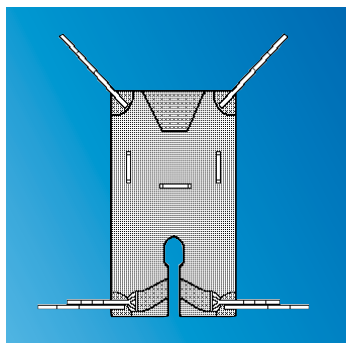


The Basic/Deluxe Range

ArjoHuntleigh bariatric slings are designed for use with ArjoHuntleigh *Tenor* mobile lift and the ArjoHuntleigh *Maxi Sky¹⁰⁰⁰* ceiling lift system. The different body shapes of bariatric patients require different sling solutions, and ArjoHuntleigh has therefore developed a range with sling types in four bariatric sizes to suit these various needs. A patient assessment that covers weight, body shape and individual is needed in order to select an optimised sling solution that ensures safety and maximised comfort.

The Basic Range,

provides the same shape and design at less cost. It has standard padding in the legs with no reinforced stitching or material. Comfort and safety are still top priority.



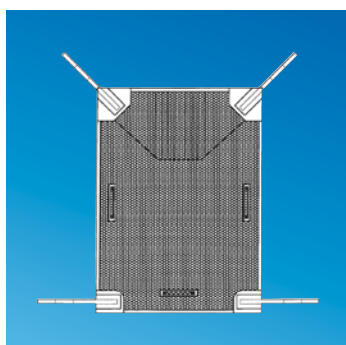
The Deluxe Range of Divided Leg Hammock

The Deluxe Range,

provides reinforced material and stitching in the most stressed areas of the sling including the shoulder, legs and spine. The extra padding provides more comfort and less pressure on delicate skin and reinforcement in leg pieces prevent leg roping, enhancing comfort for the patient.

The Deluxe Range of Divided Leg Hammock,

is sometimes preferred for pear shaped patients. Their stomachs are more prominent and require more support. The whole sling is padded with Spacer fabric which is softer and disperses heat, which prevents a build up of body heat and sweat, for increased comfort and protection of the skin.



The Basic Hammock Range

The Basic Hammock Range,

has the same design as the Deluxe range but without the divided leg facility. Lower cost material gives a more economical solution.

STRETCHER SLINGS

In addition to standard slings, ArjoHuntleigh also supplies soft stretcher slings. This full-body one-piece sling is used in conjunction with a stretcher frame. The sling stretcher is designed for use with patients who require full body support in a supine position during transfers.

- Available with or without commode aperture, in standard or mesh fabric or as a *Flite* (patient specific) version.

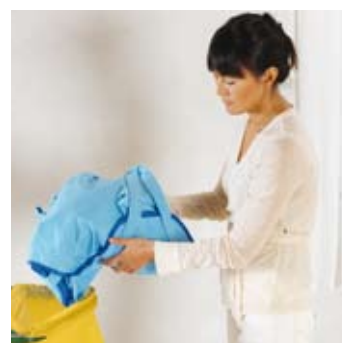


Stretcher sling with commode aperture

PATIENT SPECIFIC DISPOSABLE SLINGS – PROTECTING NURSES AND PATIENTS

ArjoHuntleigh *Flites* are a revolutionary sling concept invented by ArjoHuntleigh, designed to meet the needs and challenges of today's hospital and acute care environments. *Flites* are patient-specific, designed to accompany a patient through their hospital stay, ensuring hygienic, comfortable and secure lifting routines.

- For nursing and care staff, *Flites* are always available - no time is wasted looking for or borrowing a sling. There is no laundry process, with associated risks of lost or damaged slings, to worry about. Maximum sling availability means that sling lifters can be used as much as possible ensuring that manual lifting is avoided.
- ArjoHuntleigh *Flites* are designed to be extremely safe and cost-effective, an integral element of a successful Safe Handling Policy. Each and every *Flite* is tested to ensure maximum patient safety, peace of mind for care staff and value for money.
- There are two styles of attachment, the ArjoHuntleigh clip system or loop *Flites*, which are easily attachable to loop sling lifters, even older models still in use at facilities.
- As consumables, *Flites* offer protection against the risks associated with cross infection.
- When the patient leaves the hospital or the sling becomes soiled or dirty, there is no need to launder – throw the *Flite* away and pick out a new one.
- The *Flites* range also includes stretcher slings.



OUR LIFTERS MOVE SOMETHING VERY PRECIOUS



To ensure maximum safety and protection, every single sling we produce is hand tested in a specially constructed test rig. Our slings are load tested at 1.25 the maximum safe working load – over and above the formal testing requirements.

TAILOR MADE SLINGS



Although the standard sling range covers many patients' needs, we recognise that individual factors – height, body weight distribution, physical condition – may require a customised solution. ArjoHuntleigh has the expertise to modify all aspects of its slings – materials, size and special features – to create the optimum sling for a particular patient. The *Tailor Made Sling Service* has already designed over 2,000 customised slings.



ArjoHuntleigh Sling User Guide

Everything you need to know about ArjoHuntleigh slings is now on one disc. To help you find the optimum sling for each patient, ArjoHuntleigh has produced an easy-to-navigate software with step-by-step video sequences showing how to apply the various slings in different patient handling situations.

SLING MATERIALS



Standard Polyester

General Purpose Fabric

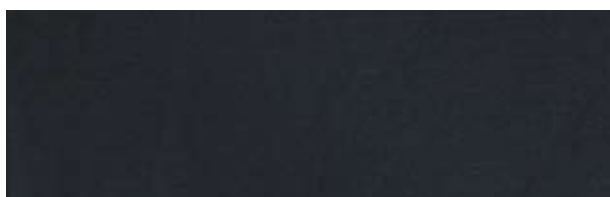
- Available within the full Standard ArjoHuntleigh Sling Range.
- Maximum washing temperature 90°C.
- Low temperature tumble dry.
- Light blue.



Standard Polyester Mesh

Bathing/Showering Fabric

- Available within the full Standard ArjoHuntleigh Sling Range.
- Maximum washing temperature 90°C.
- Low temperature tumble dry.
- Light blue.



All Day Polyester Standard

Can be left under the resident

- Available within the ArjoHuntleigh Double Amputee and Unpadded Range of ArjoHuntleigh Slings (sizes XS-LL).
- Maximum washing temperature 90° C and low temperature tumble dry.
- Black.



All Day Polyester Mesh

Can be left under the resident and used for Bathing/Showering

- Available within the ArjoHuntleigh Double Amputee and Unpadded Range of ArjoHuntleigh Slings (sizes XS-LL).
- Maximum washing temperature 90° C and low temperature tumble dry.
- Black.



Comfort Polyester Deluxe

Soft fabric for extra comfort

- Available within the Padded Range of ArjoHuntleigh Slings.
- Maximum washing temperature 90°C.
- Low temperature tumble.
- Navy blue.



Paediatric Polyester

Specifically designed for Paediatrics

- Available XXS, XS and S sizes.
- Maximum washing temperature 90°C.
- Low temperature tumble.
- Light blue with printed elephant images.

SLING SIZES

| | Size | Colour | Weight range |
|-------------|---------------|----------------------|---------------------------|
| Paediatrics | XXS | Teal | 0-25 kg (0-55 lbs) |
| | XS | Brown | 25-35 kg (55-77 lbs) |
| | S | Red | 35-60 kg (77-132 lbs) |
| Adults | M | Yellow | 55-75 kg (121-165 lbs) |
| | L | Green | 70-120 kg (154-264 lbs) |
| | LL | Purple | 100-160 kg (220-350 lbs) |
| | XL | Blue | 140-200 kg (308-440 lbs) |
| | XXL | Terracotta | 200-228 kg (440-500 lbs) |
| Bariatric | Bariatric M | Yellow/Dark Grey | 160-210 kg (350-450 lbs) |
| | Bariatric L | Green/Dark Grey | 210-250 kg (450-555 lbs) |
| | Bariatric XL | Blue/Dark Grey | 230-340 kg (500-750 lbs) |
| | Bariatric XXL | Terracotta/Dark Grey | 318-455 kg (700-1000 lbs) |

ArjoHuntleigh makes sizing and sling selection easy with a colour-coded sling system. The sling sizes covering paediatric, adult and bariatric needs each have a distinctive colour code that can be clearly seen on the edge of ArjoHuntleigh slings.

Measuring Tape



Measuring the patient's height, as well as weight, plays an important part in determining the optimum sling size for individual patients. The handy ArjoHuntleigh measuring tape provides quick answers for the sizing process.

Only ArjoHuntleigh designed parts, which are designed specifically for the purpose, should be used on the equipment and products supplied by ArjoHuntleigh. As our policy is one of continuous development we reserve the right to modify designs and specifications without prior notice.

Flites, Maxi Sky¹⁰⁰⁰, Tailor Made Slings, Tenor are trademarks belonging to the ArjoHuntleigh Group.

ARJOHUNTLEIGH
GETINGE GROUP

www.ArjoHuntleigh.com

GETINGE GROUP is a leading global provider of products and systems that contribute to quality enhancement and cost efficiency within healthcare and life sciences. We operate under the three brands of **ArjoHuntleigh**, **GETINGE** and **MAQUET**. **ArjoHuntleigh** focuses on patient mobility and wound management solutions. **GETINGE** provides solutions for infection control within healthcare and contamination prevention within life sciences. **MAQUET** specializes in solutions, therapies and products for surgical interventions and intensive care.

ArjoHuntleigh International AB

Po Box 61
SE-241 21 ESLÖV
Phone: +46 413 645 00
Fax: +46 413 645 63